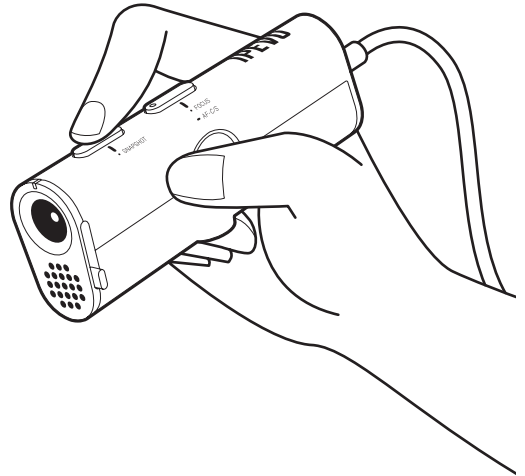
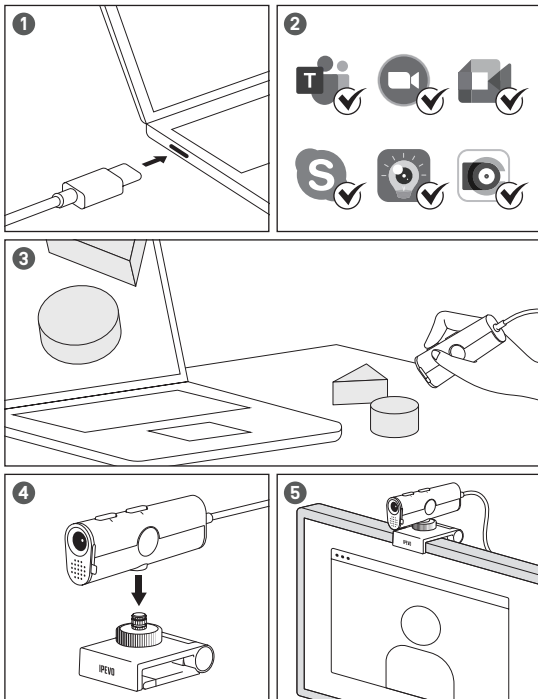


IPEVO P2V ULTRA OBJECT CAMERA

www.IPEVO.com



OBJEKTKAMERA IPEVO P2V ULTRA



Für die komplette Anleitung,
FAQ und technischen Support, besuchen Sie
global.ipevo.com/de/products/p2v-ultra/support

* Alle Rechte vorbehalten. Alle Marken sind Eigentum ihrer jeweiligen Inhaber und werden nur zu Identifikationszwecken verwendet.

Software-Download



IPEVO Visualizer
Scannen, Aufzeichnen und Erfassen von Bildern mit IPEVO-Kameras.

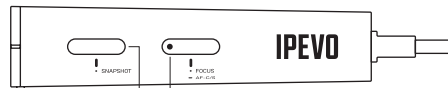
global.ipevo.com/de/software/visualizer



IPEVO CamControl
Passen Sie die Kameraeinstellungen an, ohne die Tasten zu benutzen.

global.ipevo.com/de/software/camcontrol

Lernen Sie Ihre IPEVO-P2V ULTRA kennen

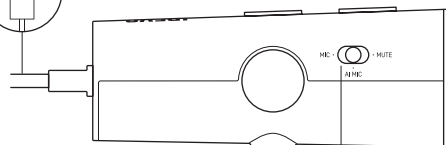


Momentaufnahme-Taste
Einmal drücken, um eine Momentaufnahme zu machen. Funktioniert nur mit IPEVO-Visualizer-Software.

Fokustaste
Zum Fokussieren einmal drücken. Drücken und 3 Sekunden gedrückt halten, um in Autofokus-Modi zu wechseln. AF-C = Kontinuierlich (Standard) AF-S = Einmalig



USB-C-Kabel



LED-Anzeiger

AUS = Videostreaming AUS

Weiß = Videostreaming AN und KI-MIKROFON AUS

Rot = Videostreaming AN UND STUMMGESCHALTET

Orange = Videostreaming AN und KI-MIKROFON AN

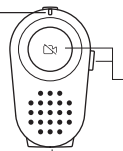
Mikrofon-Schieberegler

MIC = Mikrofon AN

AI MIC = Mikrofon AN und

KI-Geräuschreduktion AN

MUTE = Mikrofon stummgeschaltet

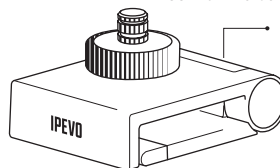


Linsenabdeckung

Kamerallinse

Mikrofon

Loch für Dreibeinstativ



Kameraklammer

Bringen Sie die Kamera an flachen Oberflächen an.



Achtung

Verwenden oder lagern Sie das Produkt nicht an den folgenden Orten:

- In der Nähe von Wärmequellen
- An sandigen oder staubigen Orten
- An Orten mit hoher Luftfeuchtigkeit

FCC Declaration

Federal Communications Commission [FCC] Statement

FC This device complies with Part 15 of the FCC Rules.

Operation is subject to the following two conditions: (1) this device may not cause harmful interference, and (2) this device must accept any interference received, including interference that may cause undesired operation.

This equipment has been tested and found to comply with the limits for a Class B digital device, pursuant to part 15 of the FCC Rules. These limits are designed to provide reasonable protection against harmful interference in a residential installation.

This equipment generates, uses and can radiate radio frequency energy and, if not installed and used in accordance with the instructions, may cause harmful interference to radio communications. However, there is no guarantee that interference will not occur in a particular installation. If this equipment does cause harmful interference to radio or television reception, which can be determined by turning the equipment off and on, the user is encouraged to try to correct the interference by one or more of the following measures:

- Reorient or relocate the receiving antenna.
- Increase the separation between the equipment and receiver.
- Connect the equipment into an outlet on a circuit different from that to which the receiver is connected.
- Consult the dealer or an experienced radio/TV technician for help.

Any changes or modifications not expressly approved by the party responsible for compliance could void the authority to operate equipment. This device and its antenna must not be co-located or operating in conjunction with any other antenna or transmitter.

For product available in the USA/Canada market, only channel 1 — 11 can be operated. Selection of other channels is not possible.

限用物質含有情況標示聲明書

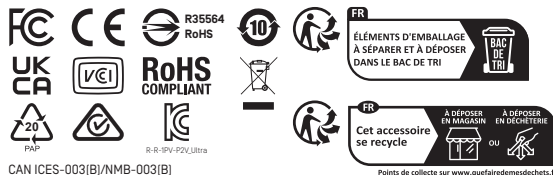
Declaration of the Presence Condition of the Restricted Substances Marking

設備名稱：USB 攝影機，型號（型式）：CDVU-161P Equipment name Type designation [Type]						
單元Unit	限用物質及其化學符號 Restricted substances and its chemical symbols					
	鉛 Lead (Pb)	汞 Mercury (Hg)	鎘 Cadmium (Cd)	六價鉻 Hexavalent chromium (Cr ⁶⁺)	多溴聯苯 Polybrominated biphenyls (PBB)	多溴二苯醚 Polybrominated diphenyl ethers (PBDE)
外殼	○	○	○	○	○	○
螺絲	○	○	○	○	○	○
主板	○	○	○	○	○	○
線材	○	○	○	○	○	○

備考1. ¹“超出0.1 wt %”及 ²“超出0.01 wt %”係指限用物質之百分比含量超出百分比含量基準值。
Note 1: ¹“Exceeding 0.1 wt %” and ²“exceeding 0.01 wt %” indicate that the percentage content of the restricted substance exceeds the reference percentage value of presence condition.

備考2. ³“○”係指該項限用物質之百分比含量未超出百分比含量基準值。
Note 2: ³“○” indicates that the percentage content of the restricted substance does not exceed the percentage of reference value of presence.

備考3. ⁴“-”係指該項限用物質為排除項目。
Note 3: The ⁴“-” indicates that the restricted substance corresponds to the exemption.



CAN ICES-003(B)/NMB-003(B)

Points de collecte sur www.quefaire-demedecheat.fr

PRODUCT / 產品 / 产品 :

IPEV0 P2V ULTRA
OBJECT CAMERA

實物攝影機
实物摄像头

MODEL / 型號 / 型号 :

CDVU-16IP

INPUT / 輸入 / 输入 :

5V \approx 0.5A

Operation temperature/ 操作溫度 / 操作温度 :

0° C to 40° C

MADE IN THAILAND/ 泰國製造 / 泰国制造